

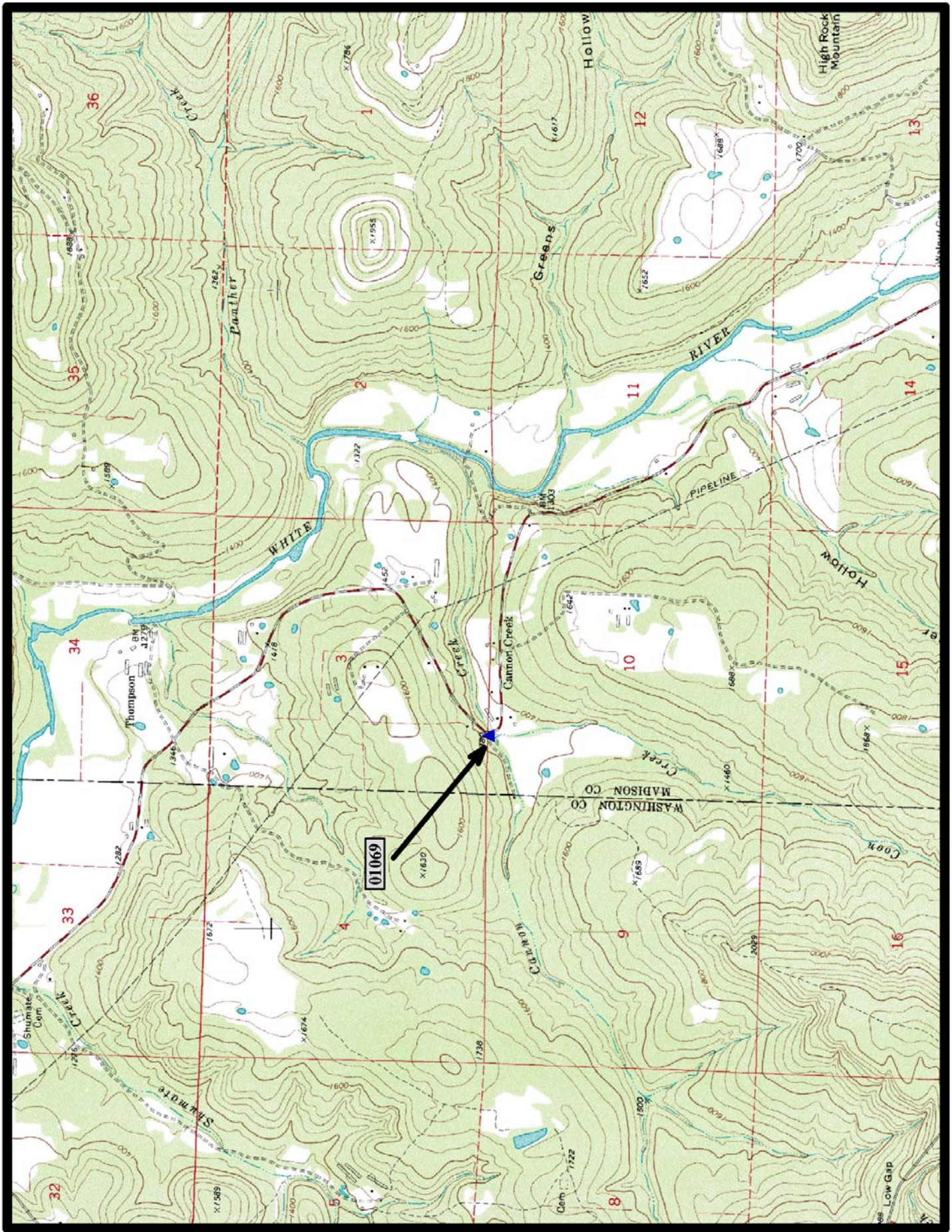
- ▲ In-Service Concrete Tee Beam (5)
- Demolished NRConcrete Tee Beam (0)
- ◼ Preserved Concrete Tee Beam (0)

## Concrete Tee Beam Bridges





**HISTORIC BRIDGE #01069**  
**COUNTY ROAD 567**  
**MADISON COUNTY**  
**CONCRETE TEE BEAM**  
**CROSSES - CANNON CREEK**  
**DATE OF CONSTRUCTION – 1929**  
**BUILDER - WALSH & THOMAS, BENTON, AR**  
**HISTORIC BRIDGE INVENTORY DATE - 2005**  
**SHPO NUMBER – MA0071**  
**HAER NUMBER -**  
**DATE LISTED ON NATIONAL REGISTER - 9/22/2004**  
**LAT./LONG. 35:54:19.35, -93:56:44.26**

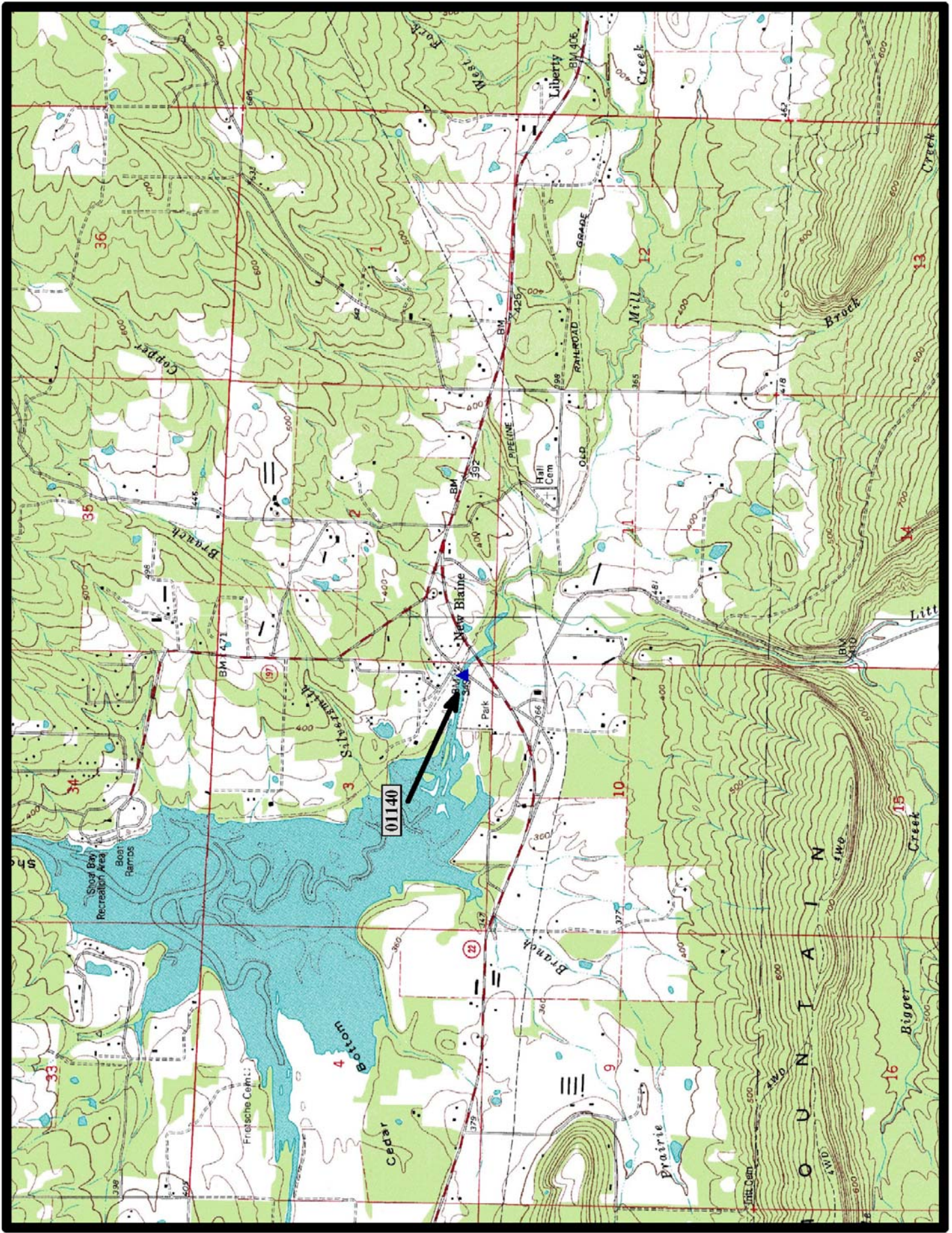


↑  
North

Durham 7.5 min. Quad



**HISTORIC BRIDGE #01140**  
**STATE HIGHWAY 197**  
**LOGAN COUNTY**  
**CONCRETE TEE BEAM**  
**CROSSES - LITTLE SHOALS CREEK**  
**DATE OF CONSTRUCTION – 1929**  
**BUILDER - COOK AND RANSOM, OTTAWA, KS**  
**HISTORIC BRIDGE INVENTORY DATE - 2005**  
**SHPO NUMBER – LO0104**  
**HAER NUMBER -**  
**DATE LISTED ON NATIONAL REGISTER - 9/27/2003**  
**LAT./LONG. 35:17:19.70, -93:25:13.93**

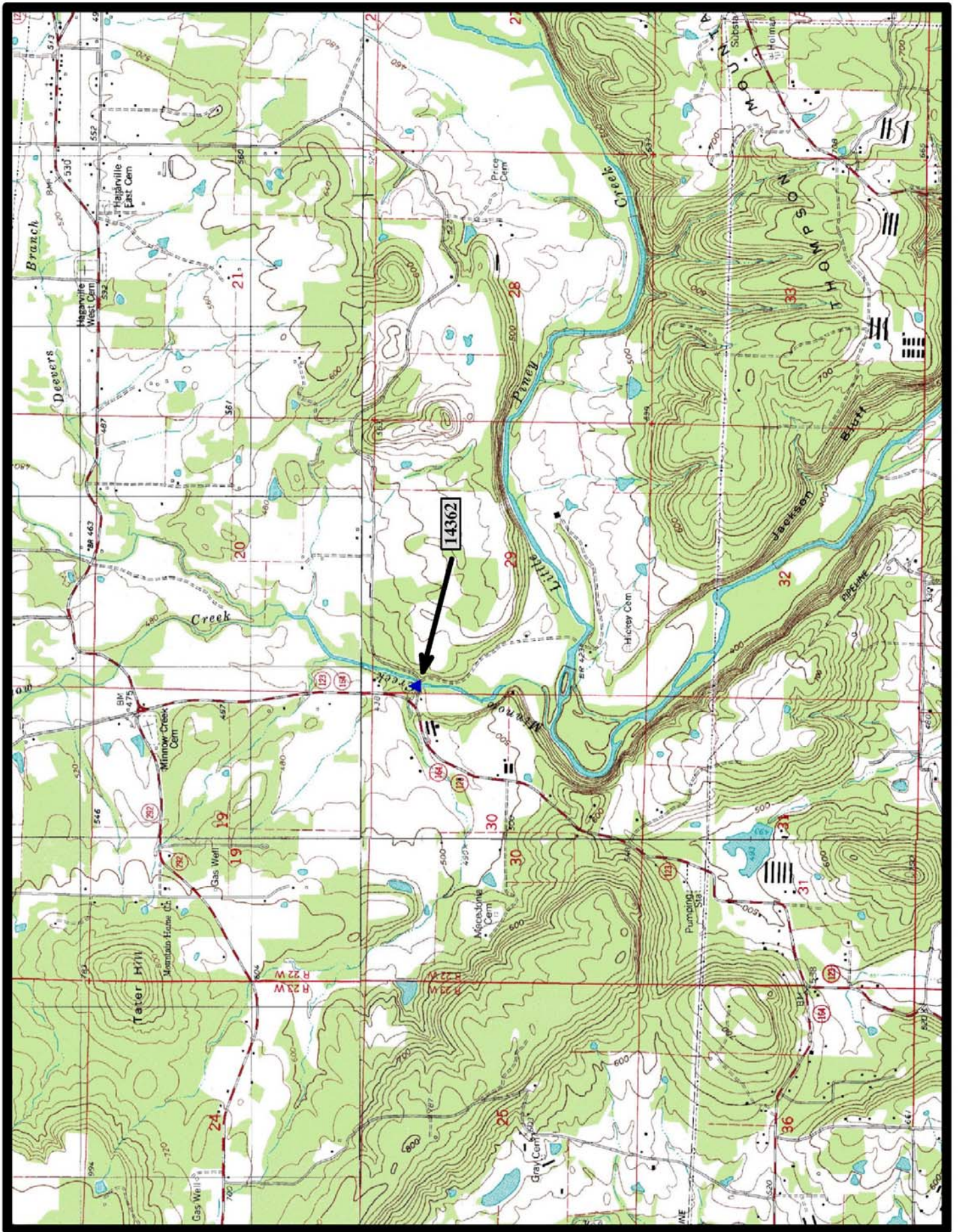


↑  
North

New Blaine 7.5 min. Quad



**HISTORIC BRIDGE #14362**  
**COUNTY ROAD 3630**  
**JOHNSON COUNTY**  
**CONCRETE TEE BEAM**  
**CROSSES - MINNOW CREEK**  
**DATE OF CONSTRUCTION – 1942**  
**BUILDER - WORKS PROGRESS ADMINISTRATION (WPA)**  
**HISTORIC BRIDGE INVENTORY DATE - 2010**  
**SHPO NUMBER –**  
**HAER NUMBER -**  
**DATE LISTED ON NATIONAL REGISTER -**  
**LAT./LONG. 35:29:49.31, -93:21:55.21**



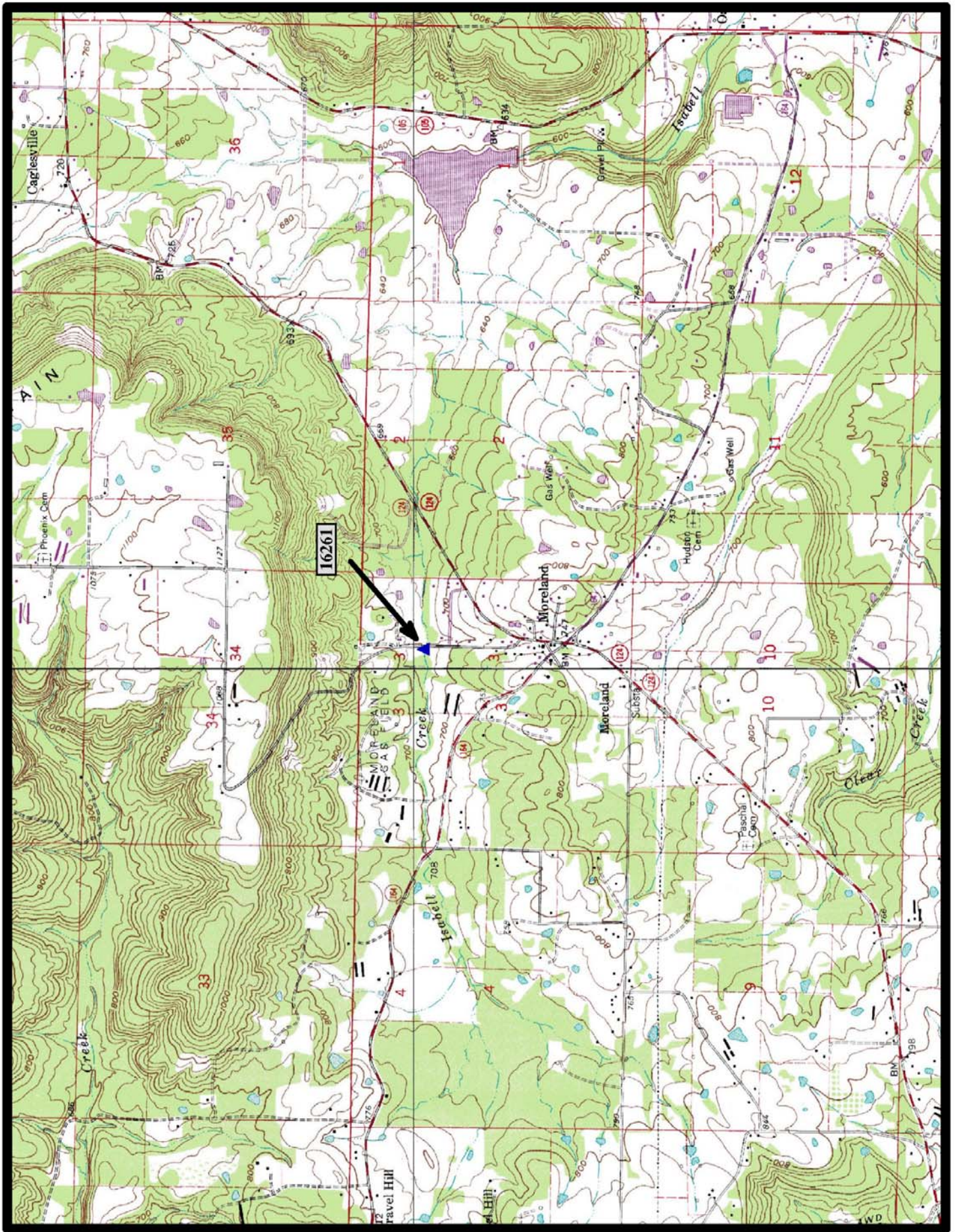
↑  
North

Knoxville 7.5 min. Quad





**HISTORIC BRIDGE #16261**  
**BUCK MOUNTAIN ROAD (Co. Rd. 2)**  
**POPE COUNTY**  
**CONCRETE TEE BEAM**  
**CROSSES - ISABELL CREEK**  
**DATE OF CONSTRUCTION - 1942**  
**BUILDER - WORKS PROGRESS ADMINISTRATION (WPA)**  
**HISTORIC BRIDGE INVENTORY DATE - 2010**  
**SHPO NUMBER - PP0281**  
**HAER NUMBER -**  
**DATE LISTED ON NATIONAL REGISTER -**  
**LAT./LONG. 35:22:28.12, -92:59:55.43**

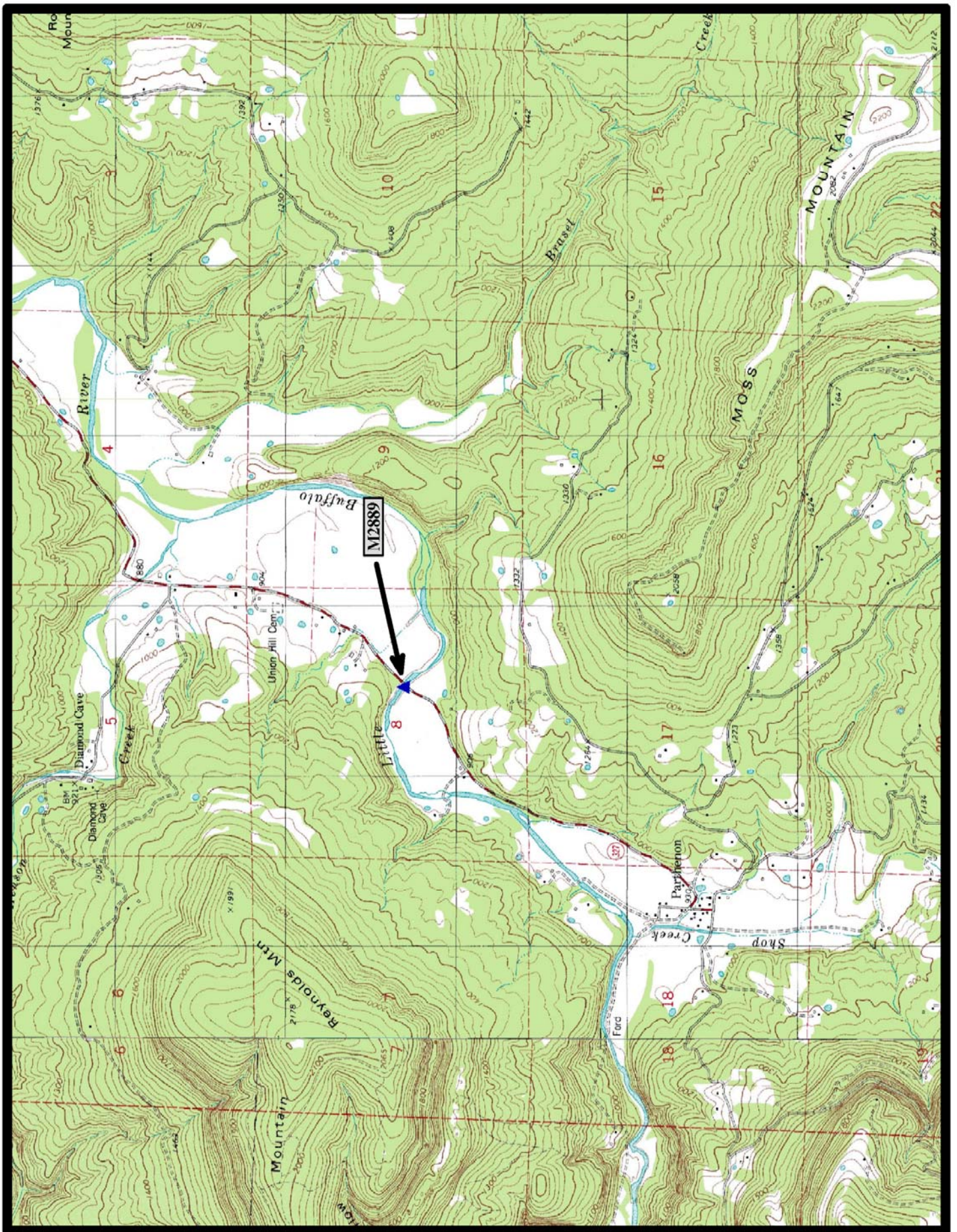


Moreland 7.5 min. Quad





**HISTORIC BRIDGE #M2889**  
**STATE HIGHWAY 327**  
**NEWTON COUNTY**  
**CONCRETE TEE BEAM**  
**CROSSES - LITTLE BUFFALO RIVER**  
**DATE OF CONSTRUCTION – 1939**  
**BUILDER - WORKS PROGRESS ADMINISTRATION (WPA)**  
**HISTORIC BRIDGE INVENTORY DATE - 1995**  
**SHPO NUMBER – NW0037**  
**HAER NUMBER - AR-80**  
**DATE LISTED ON NATIONAL REGISTER - 5/26/1995**  
**LAT./LONG. 35:58:07.61, -93:13:37.50**



↑  
North

Parthenon 7.5 min. Quad